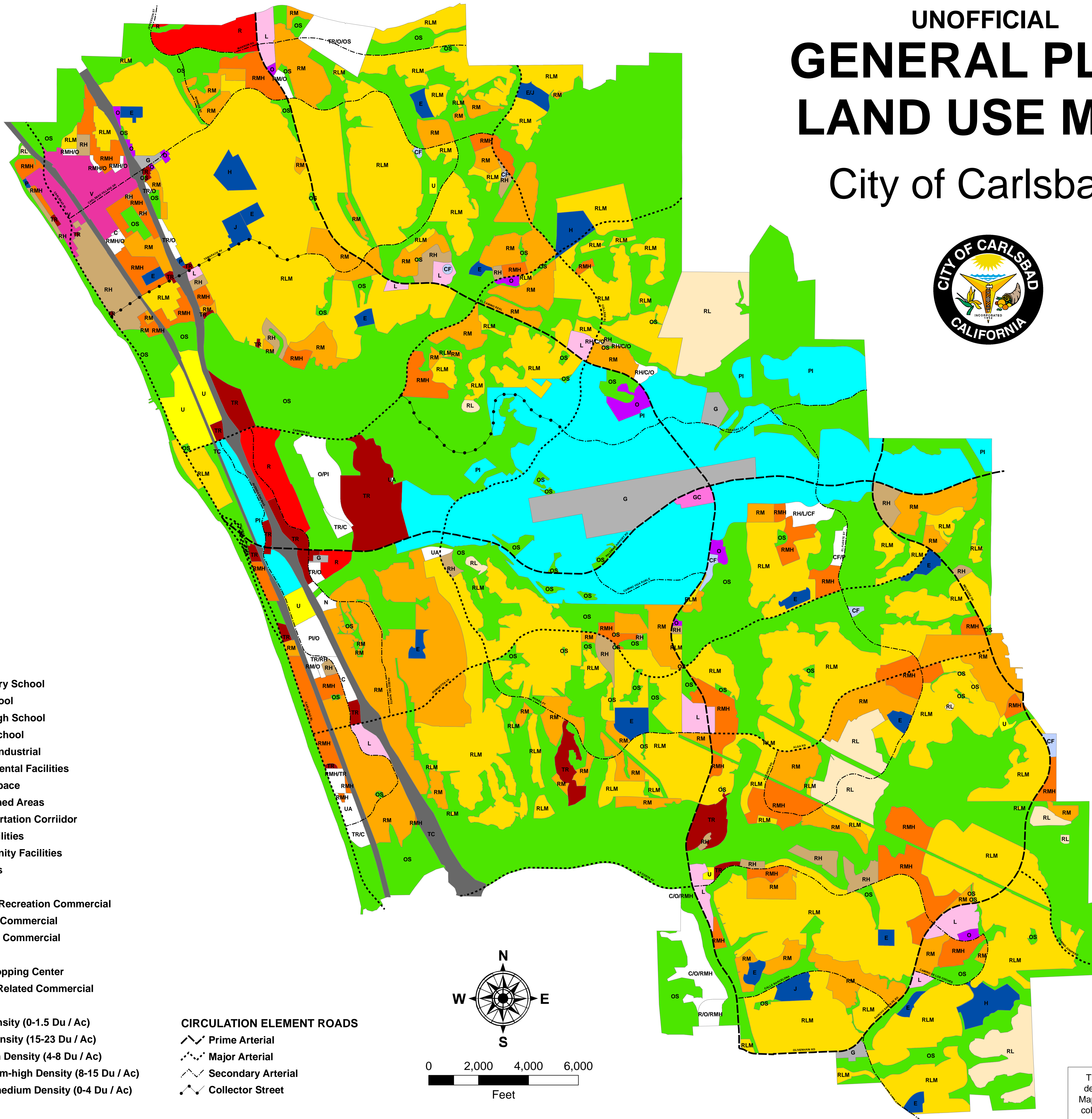


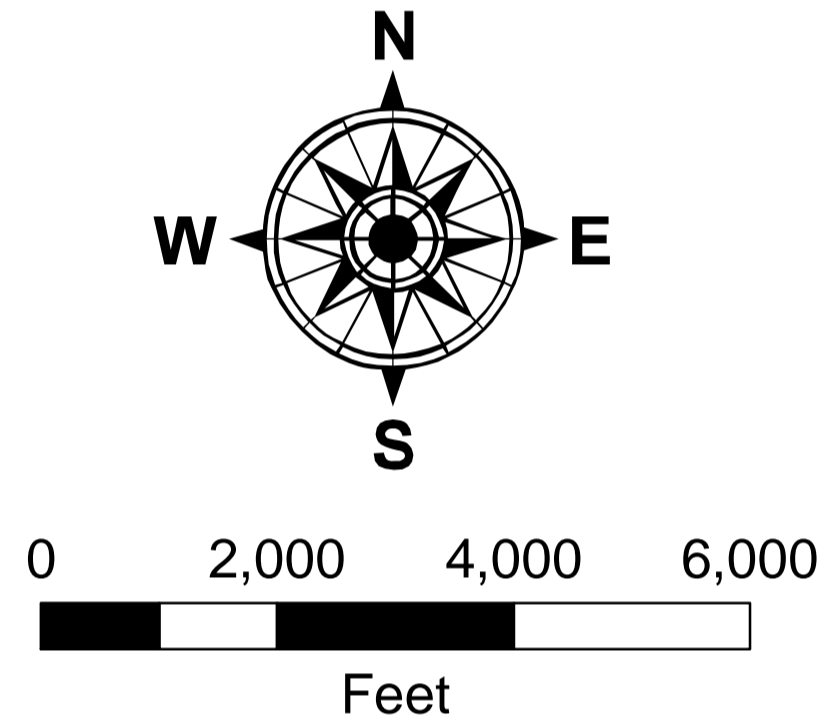
UNOFFICIAL GENERAL PLAN LAND USE MAP

City of Carlsbad



- LEGEND**
- [E] Elementary School
 - [H] High School
 - [J] Junior High School
 - [P] Private School
 - [PI] Planned Industrial
 - [G] Governmental Facilities
 - [OS] Open Space
 - [UA] Unplanned Areas
 - [TC] Transportation Corridor
 - [U] Public Utilities
 - [CF] Community Facilities
 - Multiple Uses
- COMMERCIAL**
- [TR] Travel / Recreation Commercial
 - [R] Regional Commercial
 - [GC] General Commercial
 - [V] Village
 - [L] Local Shopping Center
 - [O] Office & Related Commercial
- RESIDENTIAL**
- [RL] Low Density (0-1.5 Du / Ac)
 - [RH] High Density (15-23 Du / Ac)
 - [RM] Medium Density (4-8 Du / Ac)
 - [RMH] Medium-high Density (8-15 Du / Ac)
 - [RLM] Low-medium Density (0-4 Du / Ac)

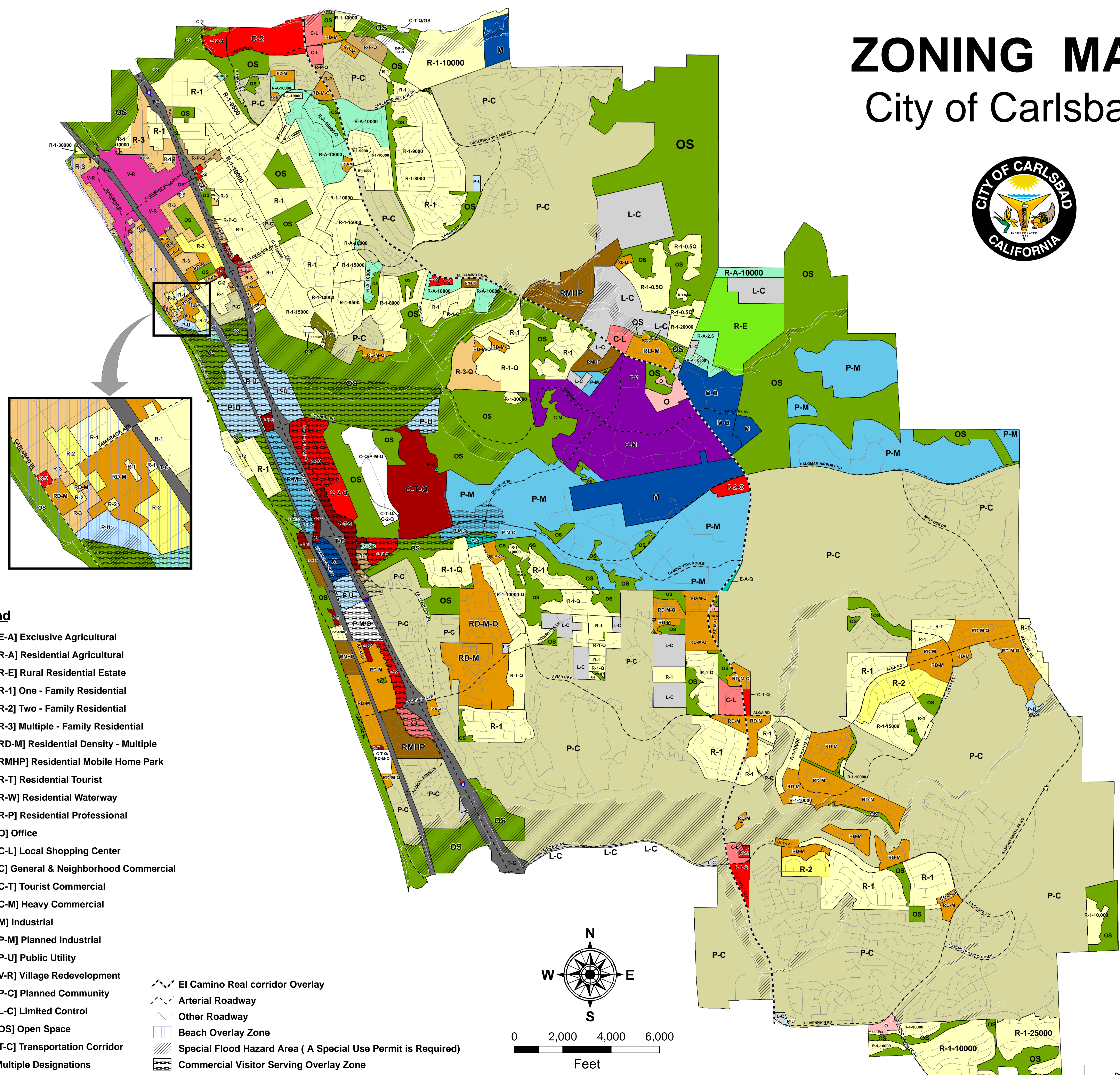
- CIRCULATION ELEMENT ROADS**
- Prime Arterial
 - Major Arterial
 - Secondary Arterial
 - Collector Street



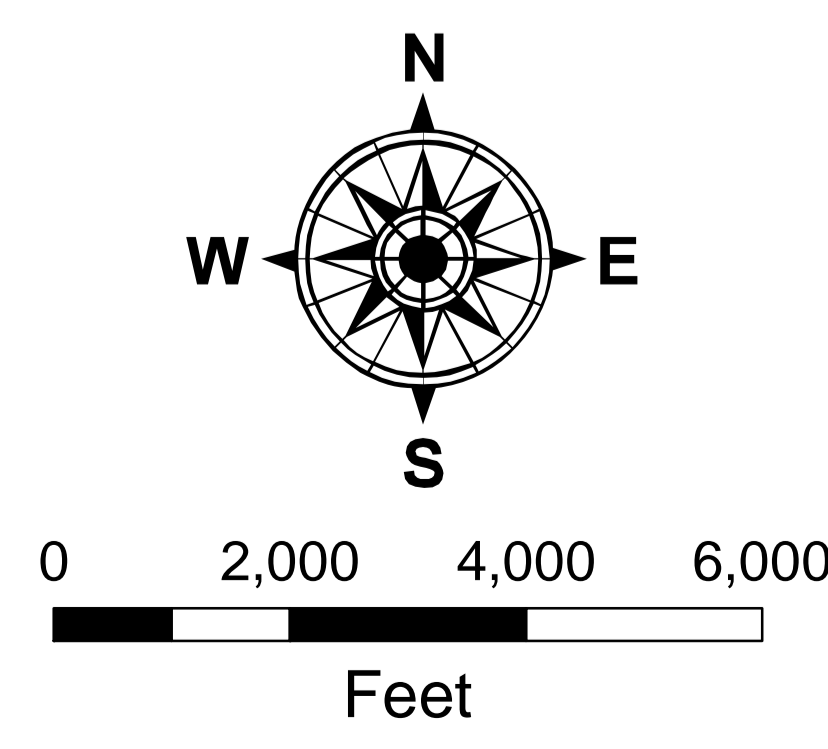
This map is unofficial. It is a partial depiction of the official General Plan Map. Ask the Planning Department for color copy of complete approved map.
Date Last Updated October 2010

ZONING MAP

City of Carlsbad



- Legend**
- [E-A] Exclusive Agricultural
 - [R-A] Residential Agricultural
 - [R-E] Rural Residential Estate
 - [R-1] One - Family Residential
 - [R-2] Two - Family Residential
 - [R-3] Multiple - Family Residential
 - [RD-M] Residential Density - Multiple
 - [RMHP] Residential Mobile Home Park
 - [R-T] Residential Tourist
 - [R-W] Residential Waterway
 - [R-P] Residential Professional
 - [O] Office
 - [C-L] Local Shopping Center
 - [C] General & Neighborhood Commercial
 - [C-T] Tourist Commercial
 - [C-M] Heavy Commercial
 - [M] Industrial
 - [P-M] Planned Industrial
 - [P-U] Public Utility
 - [V-R] Village Redevelopment
 - [P-C] Planned Community
 - [L-C] Limited Control
 - [OS] Open Space
 - [T-C] Transportation Corridor
 - Multiple Designations
- Overlays**
- El Camino Real corridor Overlay
 - Arterial Roadway
 - Other Roadway
 - Beach Overlay Zone
 - Special Flood Hazard Area (A Special Use Permit is Required)
 - Commercial Visitor Serving Overlay Zone



Date Last Updated October 2010
J:\gis\products\planning\GIS\MapServer\COMBO_ZONING_GPLU.mxd
Printed October 2010