

Land Management Updates HMP Annual Meeting



Vince Rivas and Dane van Tamelen
Habitat Managers

March 6, 2025

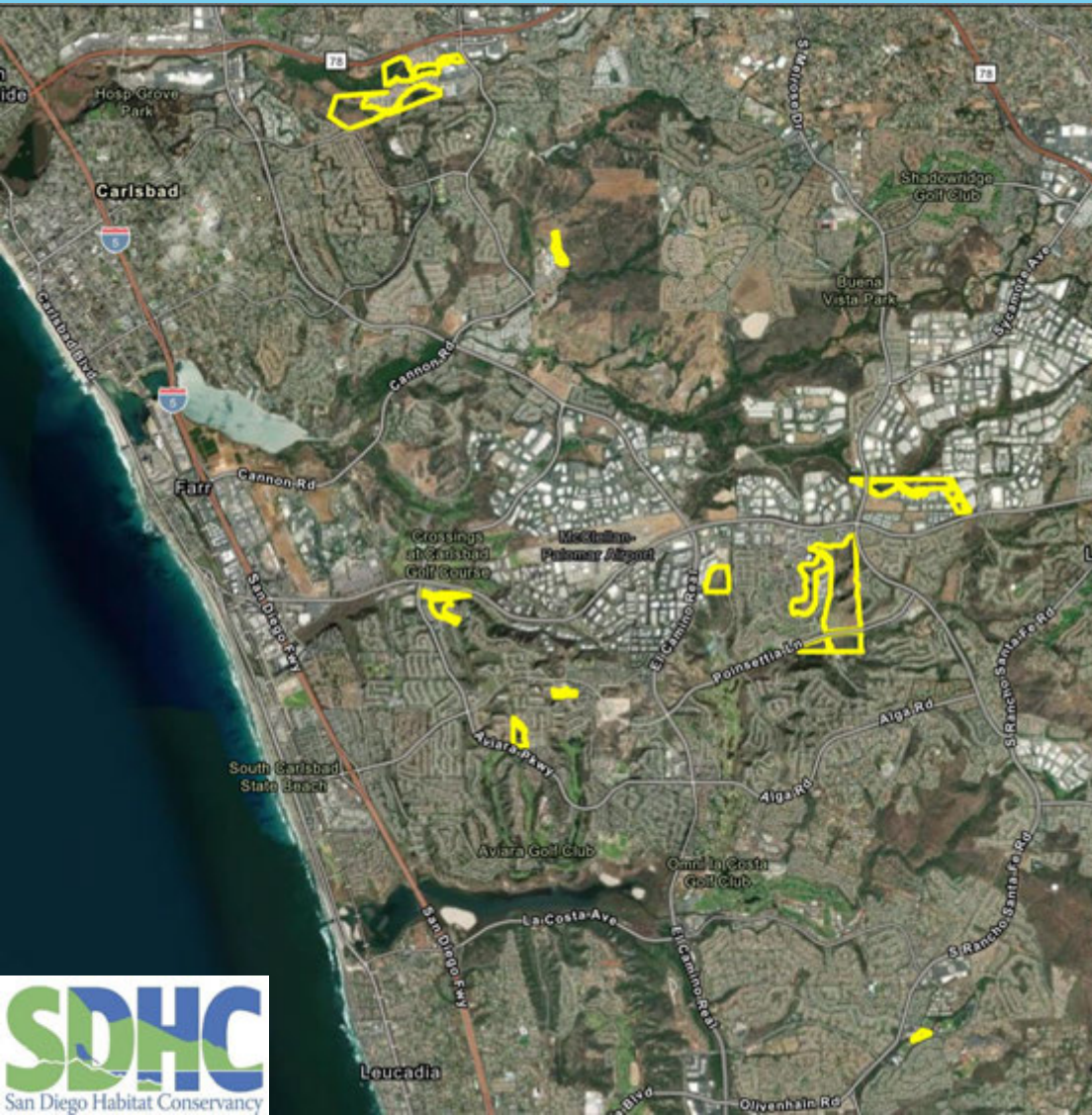
Open Space Preserves Managed by SDHC

Over 2,000 acres of managed open space land.

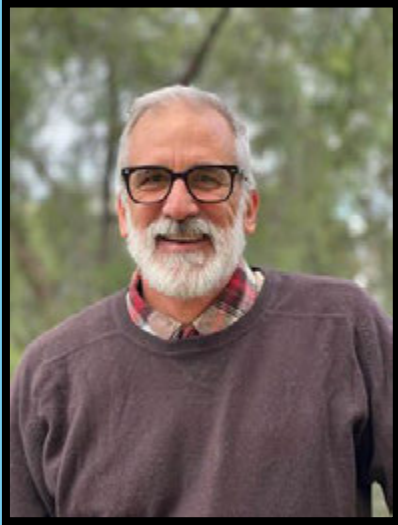
36 active preserves throughout the County.

Nine active preserves in Carlsbad:

- Bressi Ranch
- Carlsbad Raceway
- Daybreak
- Emerald Pointe
- Laurel Tree Lane
- Muroya
- Quarry Creek
- Sage Creek High School
- Sonata
- Poinsettia 61 (under contract)



Our Team



Don Scoles
Executive Director



Penny Bauder
Acquisition Program Manager



Connie Koros
Accountant



Vince Rivas
Habitat Manager



Galen Reid
Habitat Manager



Dane van Tamelen
Habitat Manager

Before Long-Term Management

- **A Long-Term Management Plan is prepared for a Preserve or Property**
- **Provide Estimate for Long-term Management or Operating Agreement**



- **Conduct initial baseline biological surveys and vegetation mapping**
- **Install informational signs, fencing, access gates, and fuel zone staking**

How We Manage Preserves

- **Conduct site visits monthly, quarterly, semi-annually, or annually**
- **Photograph stations to document and compare conditions over time**
- **Perform protocol surveys for endangered/threatened species present**
- **Map sensitive plant and animal species observed or detected**
- **Note non-native species, trash, or other disturbances to be removed**

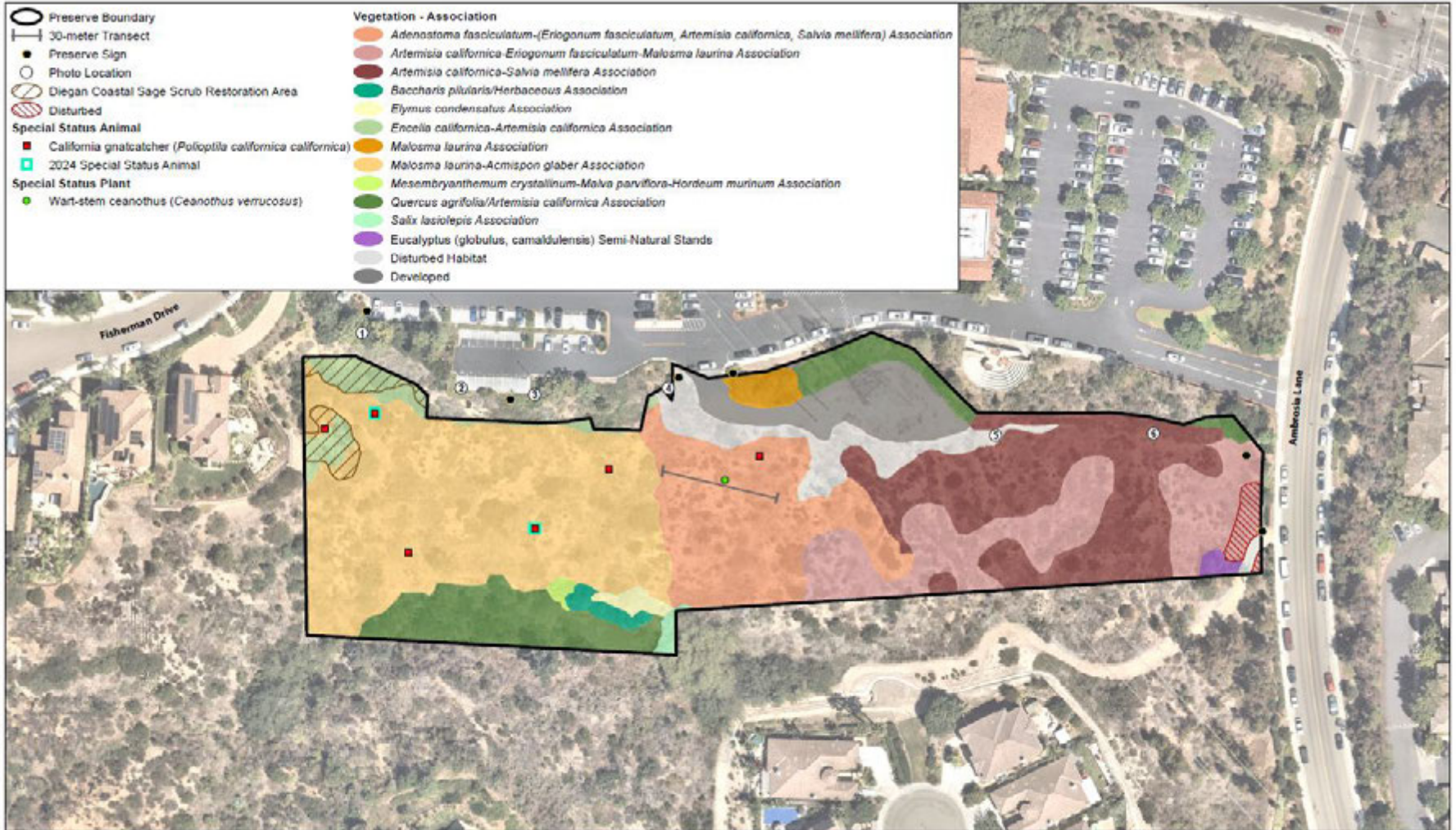


How We Manage Preserves



- **Address issues as needed, partner with contractors for larger efforts**
- **Coordinate with surrounding land-owners, landscapers, and HOAs**
- **Perform outreach events with volunteers, interns, and HOAs**
- **Annual reporting submitted to the City, County, and/or Agencies**

Example Figure of Reported Data



Source: HEIX Environmental Planning, Aerial Photo: NEMAID 2021



Biological Resources
Daybreak Community Church Preserve

Figure 3

Photo-documentation Over Time



Quarry Creek – Volunteer Cleanups

Last year we hosted two volunteer cleanups during 2024 with Preserve Calavera as part of I Love A Clean San Diego's annual cleanup events in April and September.



Quarry Creek – Volunteer Cleanups



Over 100 volunteers attended these events, removing over 5,000 pounds of trash, recyclables, and hazardous waste!



Quarry Creek – Volunteer Cleanups

Join us on **APRIL 26th** for the next volunteer cleanup!



San Diego Thornmint Enhancement Project Update

San Diego thornmint (*Acanthomintha ilicifolia*): California Rare Plant Rank: 1B.1

Historic populations at Carlsbad Raceway (CR) and Emerald Pointe (EP) Preserves dwindled; threatened by nonnative grasses and climate conditions.



San Diego thornmint
Photos by Vince Rivas

Emerald Pointe



Carlsbad Raceway



San Diego Thornmint Enhancement Project Update

Awarded SANDAG EMP grant in 2023 to enhance populations of San Diego thornmint at EP and CR.

In 2024, we observed a high of 185 and 146 individuals at EP and CR, respectively.



**Thornmint
in flower
(in June)
Photo by
Jonathan
Mercado
(HELIX)**



Emerald Pointe



Carlsbad Raceway

Ward's Weed Control

Ward's weed (*Carrichtera annua*):
invasive plant species found within
Bressi Ranch Preserve.

Priority for eradication for the City of
Carlsbad.



Ward's Weed Control

Grows in precarious areas; under dense native vegetation and steep hillsides.

Coordinate with trained volunteers, contractors, and the City to contain populations.



Coast Live Oak Research

Observations of abnormal, blackened acorns in coast live oak (*Quercus agrifolia*) trees.

"Symptomatic" acorns lack signs of herbivory and are nonviable.

Research at San Diego State University to assess for potential novel pathogen (fungi or bacteria).



Bottom Right: Symptomatic acorn in tree canopy.
Bottom Left: Comparison of acorn stages

Coast Live Oak Research

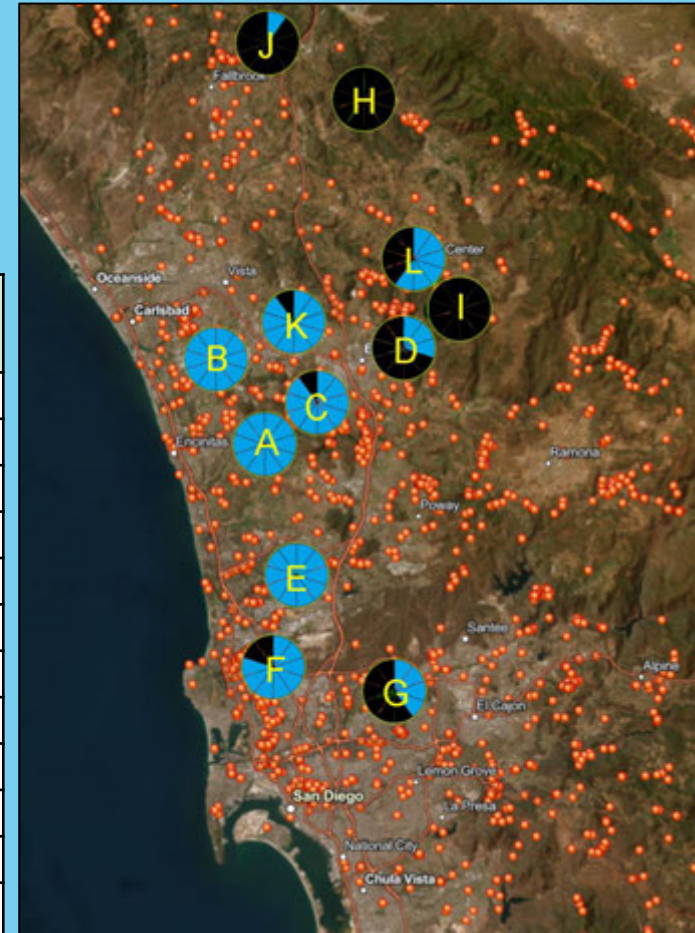
Objectives:

1. Determine spatial distribution
2. Compare microbial communities
3. Determine transmission pathway

Preliminary Results:

Locality	Letter ID	Sympt Trees	Asympt Trees
Rancho Santa Fe	A	0	10
Carlsbad	B	0	10
Escondido	C	1	9
Escondido	D	7	3
Rancho Penasquitos	E	0	10
San Diego	F	2	8
San Diego	G	6	4
Pala	H	10	0
Escondido	I	10	0
Fallbrook	J	9	1
San Marcos	K	1	9
Valley Center	L	4	6

Pie charts of surveyed trees (blue = asymptomatic; black = symptomatic) over coast live oak observations on iNaturalist (red dots)



Thank you!

Feel free to contact us at:

VinceR@sdhabitat.org

DaneVT@sdhabitat.org

www.sdhabitat.org